



June 5, 2020

Dear Parents & Campers:

This document is a follow-up to the previously sent Final Mail-Out Instructions. As promised, we wanted to provide you with additional details related to the drop off and pick up processes, as well as address a few final items.

Drop Off

Item of note before leaving for camp: please check the temperature of everyone who will be riding in the vehicle before leaving your house. If anyone is showing signs of fever, experienced loss of taste and/or smell, having trouble breathing or come in contact with anyone having tested positive within the last 14 days, they should not travel to camp as this would expose all other passengers. This will also help the nurses from having to isolate campers the moment they arrive at camp.

Our new drop off process will require ALL drivers to enter through the back entrance. The back entrance is roughly 3.3 miles off of Hwy 71. We will have staff and or signs to help direct traffic. Please reference the "Drop Off Map" below, where the red line shows the main traffic flow for vehicles and campers.

When check in begins at 3:00, there will be a stop for all vehicles where campers must exit the vehicle and check in with the nurses. Anyone not spending the week at camp must remain in their vehicle wearing a face covering. Please note: no one except for campers and staff are allowed out of their vehicles once on the grounds. There is an open parking lot just before turning off of Hwy 71 where we encourage parents to stop, get out, stretch your legs, and give lots of hugs and final instructions before proceeding to the campgrounds for drop off. There just so happens to be a great little walk up dinner called the Lighthouse right there that has some incredible food if you need a bite to eat as well.

Nurses will be checking temperatures, asking questions and collecting ALL medications. This includes over the counter medications, vitamins, supplements and prescription medications. Please be sure that the camper has their medication readily available to give to the nurses at this time.

Once checked in with the nurses, everyone will reload in your vehicle and proceed to the next set of pavilions where once again campers will exit their vehicle, deposit all funds to the bank (saving a few dollars for Saturday evening's snack bar) and then checking in. At this point, campers will receive their team color and cabin assignments as well as their first activity to immediately start earning points for their team.

From here, all female campers will unload their luggage and follow the green path over a bridge and to their cabins. Vehicles with no male campers can follow the yellow path, past the cafeteria, and out towards the normal main entrance to exit. Those with male campers will proceed to the boy's cabins,

following the red line and drop off campers and luggage before continuing out through the normal main entrance to exit.

Pick up

Pick up will also look very different from previous years. As with drop off, drivers are not allowed out of their vehicles. Please reference the “Pick Up Map” below where once again the red line shows the main flow of traffic. Drivers will enter the campgrounds through the back entrance and come all the way to the front of the chapel. As campers clean up their bunks and finish packing, they will all be congregated in the chapel for efficient pick up.

After all campers have been loaded into their vehicles, the next stop will be the side of the Recreation Barn where we will have all of the girls luggage organized by cabin and team color. We will help get girl camper luggage loaded and then if no boys luggage is needed, drivers can follow the yellow path, over the creek and out through the main entrance. Those that need to pick up boys’ luggage will continue along the red path, load up luggage and continue behind the cafeteria and to the main gate.

Again, the parking lot once you hit Hwy 71 would be an excellent spot to get out, give and get hugs, reorganize luggage, and get prepped for the drive home.

Additional items to mention

- We are asking every camper to please bring a container of liquid hand soap AND a container of hand sanitizer if possible. We understand that these items are in high demand and could be very difficult to come by.
- Another item to add to your campers packing list is a flashlight and or lantern. Those that had them last year were very helpful.
- In previous years, we have allowed visitors on Friday evenings for the award banquet, and occasionally during the week in special circumstances. This year due to the directives, unfortunately we are unable to allow any visitors at any point during the week.
- We are strongly encouraging all campers and staff to quarantine as much as possible 14 days leading up to camp, which would begin on Saturday June 6th. This will help reduce possible infections and further align with recommendations from the Arkansas Health Department.

Thank you for allowing us to minister to your child(ren). If you have any questions regarding this year’s camp, feel free to contact me at (501) 753-6577 (Office), (501) 772-0447 (Cell), or camp@RRVHC.com.

Training them to serve Him,

Henri J. Pousardien

Henri J. Pousardien
Camp Commander

P.S. Please call right away should you need to cancel. We can still send back part of your registration fee *if you cancel at least 7 days prior (by **June 13th**)*. However if you need to cancel because of the Coronavirus for you or your family; this year we will give you a full refund anytime up to the first day of camp.



Figure 1 - Drop Off Map

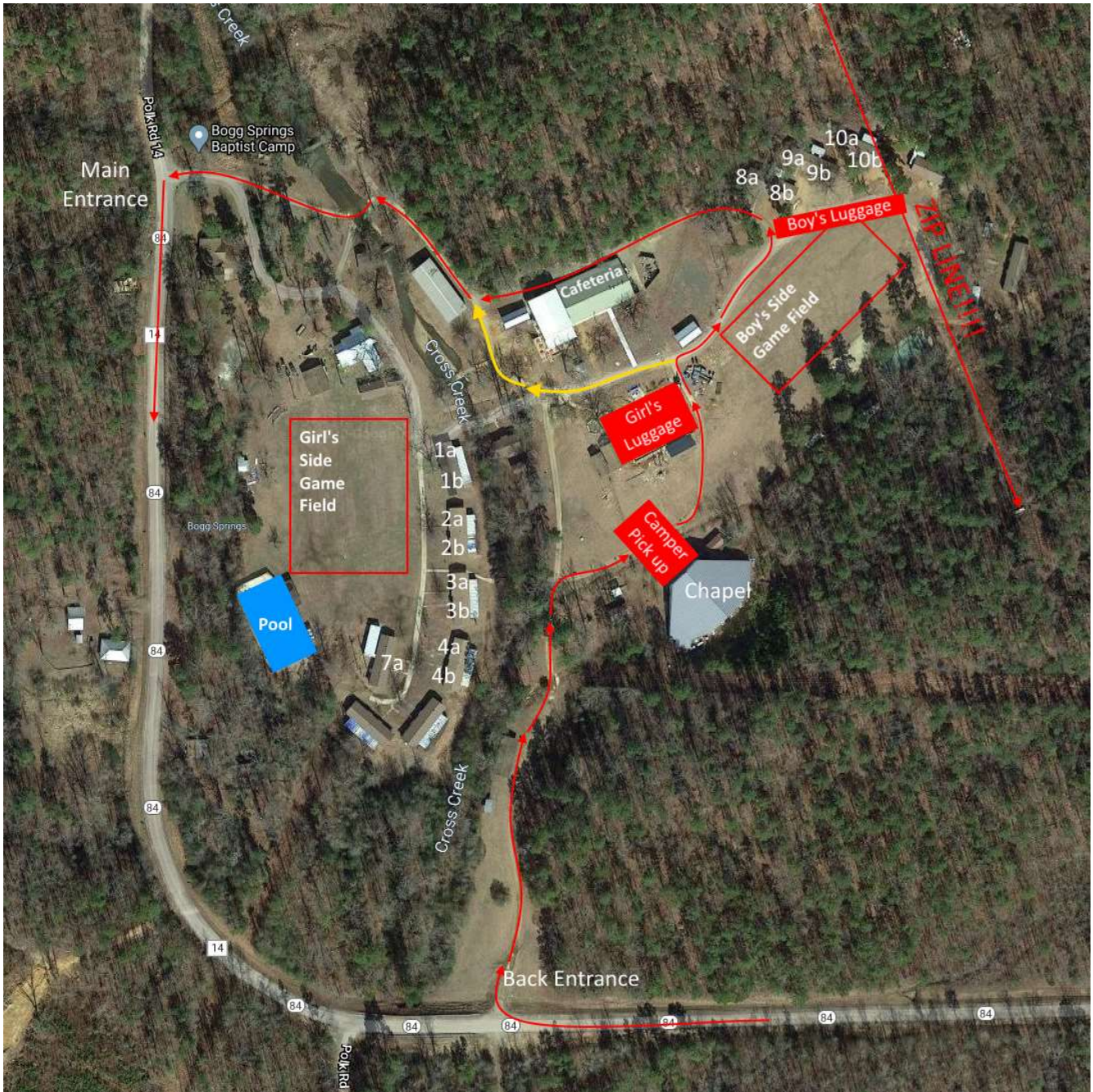


Figure 2 - Pick Up Map

Camp Location

Bogg Springs Baptist Camp
784 Hwy 84, Wickes, AR 71973

Note: the camp is not located in North Little Rock, AR--this is our administrative office.

“Check-in” is from 3:00 to 4:00 p.m. on Saturday, June 20th. (Campers receive activity points for their team between 4:00 and 5:00 p.m.) Please remember, arriving late causes extra work for counselors and staff to help a camper “catch-up” and throws the balanced teams off for the first points of the week, but please drive safely even if you arrive late. All non-campers and non-staff should plan to leave before 5:00 p.m.

All campers need to stay the whole week, June 20-27 (Saturday to Saturday as was stated in the camp registration.) Trying to arrive late or leave early throws off the balance of the teams and does not give us a chance to draw the spiritual teaching of the week together for that camper (including the last morning’s quiet time).

Please make arrangements for campers to be picked up between 8:30 and 9:30 a.m. on the morning of Saturday, June 27th, (Each cleaned cabin must pass inspection before campers of that cabin can leave.)

As mentioned earlier additional information regarding the specifics of this year’s drop off and pick up processes will be provided soon. Thank you for your effort to drop off and pick up your child(ren) within the above times.

Directions: Bogg Springs is located on HWY 84, 2 miles north and 4 miles west of Wickes, AR. The Bogg Springs road turns west approximately 20 miles south of Mena or 20 miles north of DeQueen on Hwy 71.

Distances to Wickes, AR 71973

Baton Rouge, LA	398	Midlothian, TX	251
Centerview/Warrensburg, MO	399	Oklahoma City, OK	251
Dallas, TX	221	Olsburg/Riley, KS	482
Joplin/Saginaw, MO	248	Ottawa, KS	387
Kansas City, KS	396	Richland, MS	366
Kilgore, TX	158	San Angelo, TX	478
Little Rock, AR	137	Sedalia, MO	413
Longview, TX	146	Southaven, MS	282
Lowell, AR	215	Springdale, AR	173
Manhattan, KS	478	Springfield, MO	307

